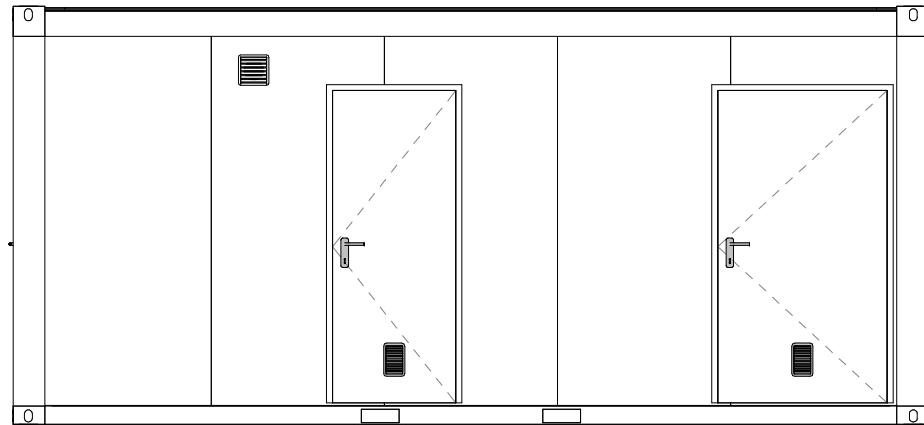
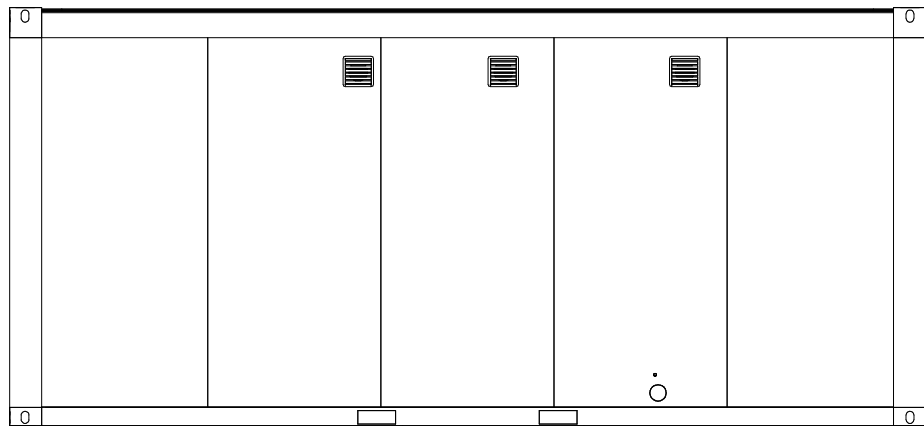


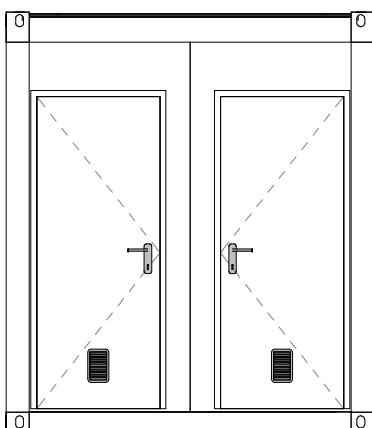
View Front side
1 : 50



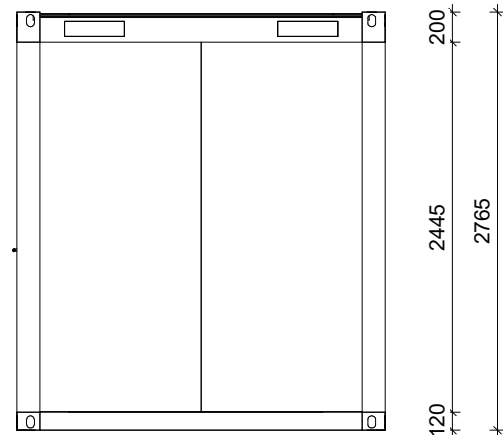
View Back side
1 : 50



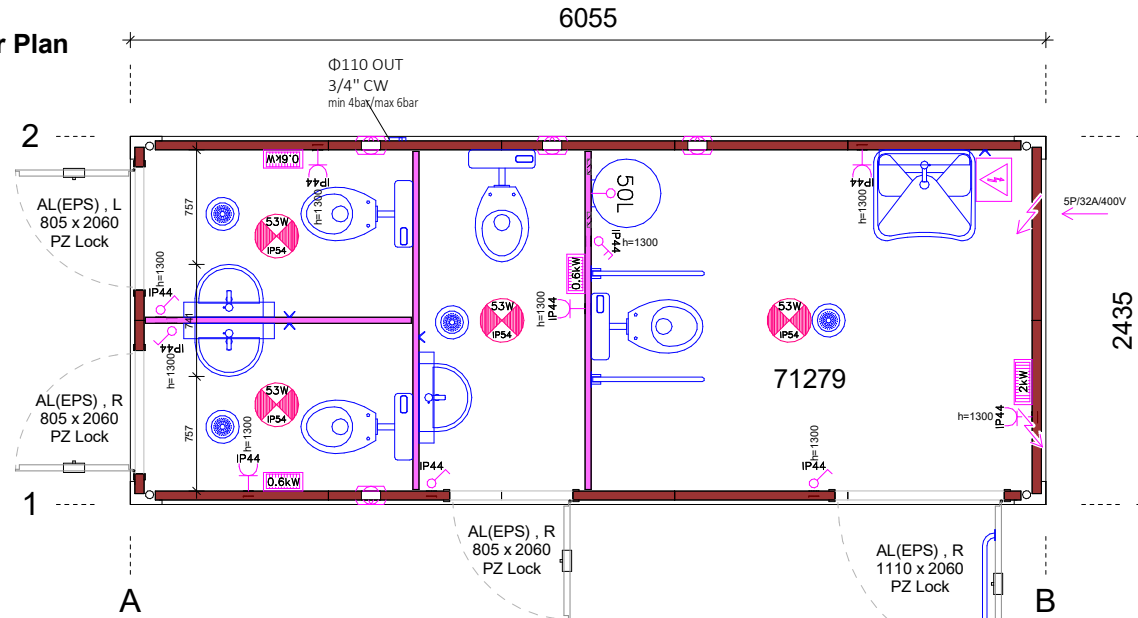
View Left side
1 : 50



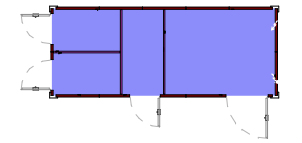
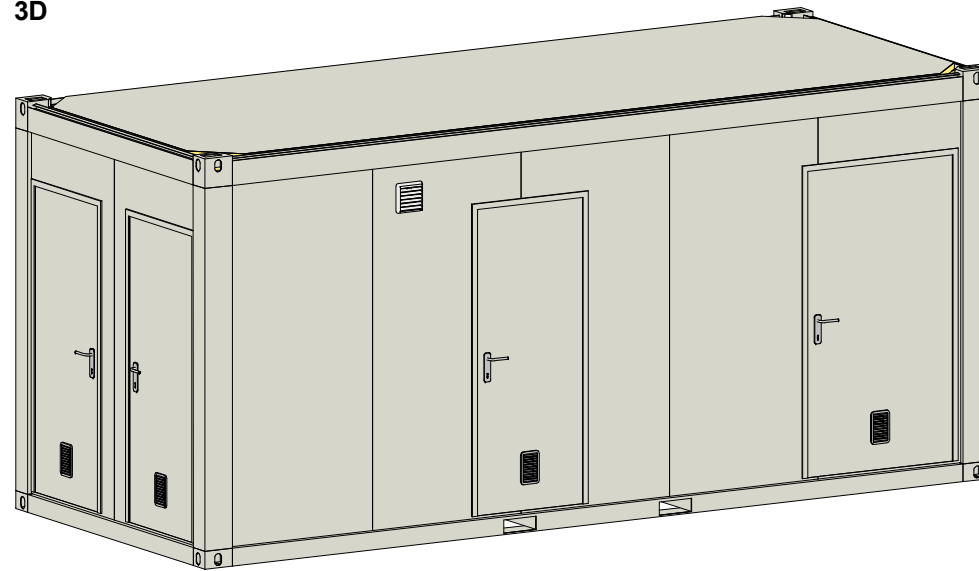
View Right side
1 : 50



Floor Plan
1 : 50

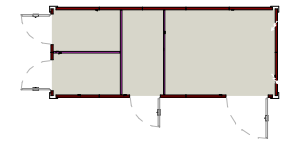


3D



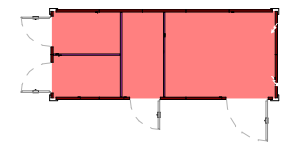
Floor Finish

PVC Gray



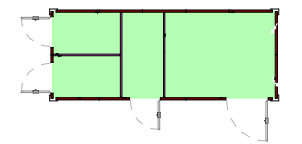
Interior Wall Finish

RAL 9002



Floor Board

Woodcement plate



Ceiling Finish

FT 9002

Light type		Pcs.		
	Light sanitary 1x53W IP54	4		
Electrical equipment		Pcs.		
	Switch 2P IP44	1		
	Junction Box	1		
	Heater el. San 0.6kW	3		
	Heater el. San 2kW	1		
	Socket IP44	5		
	Switch IP44	4		
	Ventilation Fan	4		
Panel Type	Insulation	Length [m]	Stk.	
	Fe-40	40mm	6.23	3
	PIR-60 [9002/9002]	60mm	16.03	14



Pos.	Title	NET Dim.	Dim.	Material	Pcs
D103	Door single AL(EPS), R	705x2000	805x2060	AL	2
D104	Door single AL(EPS), L	705x2000	805x2060	AL	1
D107	Door single AL(EPS), R	1010x2000	1110x2060	AL	1

Customer:
Drwg. name:
Plan with views
Object:
20' CTN
Ref. number:
N-99316-20
Date:
30.1.2020

Drwg. Nr.:
N-99316-20 - 01
Version:
01
Scale:
As indicated
Designed:
Igor Krištof
Approved:

Labels
Plumbing System
Electric Type
Forklift
Roof Insulation
Floor Insulation
Frame Galvaniz.
Frame Colour
Interior Height
Export of CTN

REBLOCK
PVC
230V, 50Hz (NO)
250x90-1200mm
MW 100mm
MW 100mm
/
RAL 9002
2,5m
Assembled